



Net Polyclonal Antibody

Catalog No	YP-Ab-01894
Isotype	IgG
Reactivity	Human;Mouse
Applications	IF;ELISA
Gene Name	ELK3
Protein Name	ETS domain-containing protein Elk-3
Immunogen	The antiserum was produced against synthesized peptide derived from human Elk3. AA range:323-372
Specificity	Net Polyclonal Antibody detects endogenous levels of Net protein.
Formulation	Liquid in PBS containing 50% glycerol, 0.5% BSA and 0.02% sodium azide.
Source	Polyclonal, Rabbit,IgG
Purification	The antibody was affinity-purified from rabbit antiserum by affinity-chromatography using epitope-specific immunogen.
Dilution	Immunofluorescence: 1/200 - 1/1000. ELISA: 1/20000. Not yet tested in other applications.
Concentration	1 mg/ml
Purity	≥90%
Storage Stability	-20°C/1 year
Synonyms	ELK3; NET; SAP2; ETS domain-containing protein Elk-3; ETS-related protein ERP; ETS-related protein NET; Serum response factor accessory protein 2; SAP-2; SRF accessory protein 2
Observed Band	
Cell Pathway	Nucleus.
Tissue Specificity	Brain,Epithelium,Placenta,
Function	function:May be a negative regulator of transcription, but can activate transcription when coexpressed with Ras, Src or Mos. Forms a ternary complex with the serum response factor and the ETS and SRF motifs of the Fos serum response element.,similarity:Belongs to the ETS family.,similarity:Contains 1 ETS DNA-binding domain.,subunit:Interacts with CTBP1.,
Background	This gene encodes a member of the ETS-domain transcription factor family and the ternary complex factor (TCF) subfamily. Proteins in this subfamily regulate transcription when recruited by serum response factor to bind to serum response elements. This protein is activated by signal-induced phosphorylation; studies in rodents suggest that it is a transcriptional inhibitor in the absence of Ras, but activates transcription when Ras is present. Alternate splicing results in multiple transcript variants. [provided by RefSeq, Jan 2015],

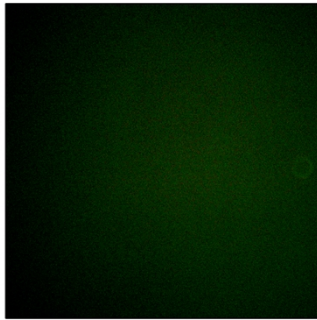
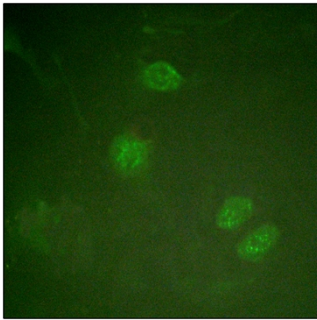
**matters needing attention**

Avoid repeated freezing and thawing!

Usage suggestions

This product can be used in immunological reaction related experiments. For more information, please consult technical personnel.

Products Images



Immunofluorescence analysis of HeLa cells, using Elk3 Antibody. The picture on the right is blocked with the synthesized peptide.